



Establishment 1983



2022

TAVAN TAK INDUSTRIAL GROUP

Submersible Dewatering Pumps
ISO 9001:2015 Certificate From TUV Austria





**Tavan
Tak**

www.tavantak.ir

Email : info@tavantak.ir

Tavantak Jam Company (TJC)

Tavantak was established in 1983 for the purpose of manufacturing agricultural implements and water pumps, as well as one of the first to design and produce a submersible pump

High quality and compliance with global standards has resulted in the production of a diverse range of products, capturing markets across Europe, both in the industrial and the consumer categories

TJC uses state-of-the-art equipment and software systems, employing highly capable personnel with advanced technical knowledge to develop market leading products in

TMR4 (Submersible Water Pump)	3
TMR6 (Submersible Water Pump)	5
TPT4 (Submersible Water Pump)	7
TPT6 (Submersible Water Pump)	9
TPA (Submersible Sewage Pump)	11
TPB (Submersible Sewage Pump)	13
TPC (Submersible Sewage Pump)	15
TPD (Submersible Sewage Pump)	17
TMK (Submersible Sewage Pump)	19
TPS (Centrifugal Electro Pump)	21
TPH (Centrifugal Radiator Pump)	23

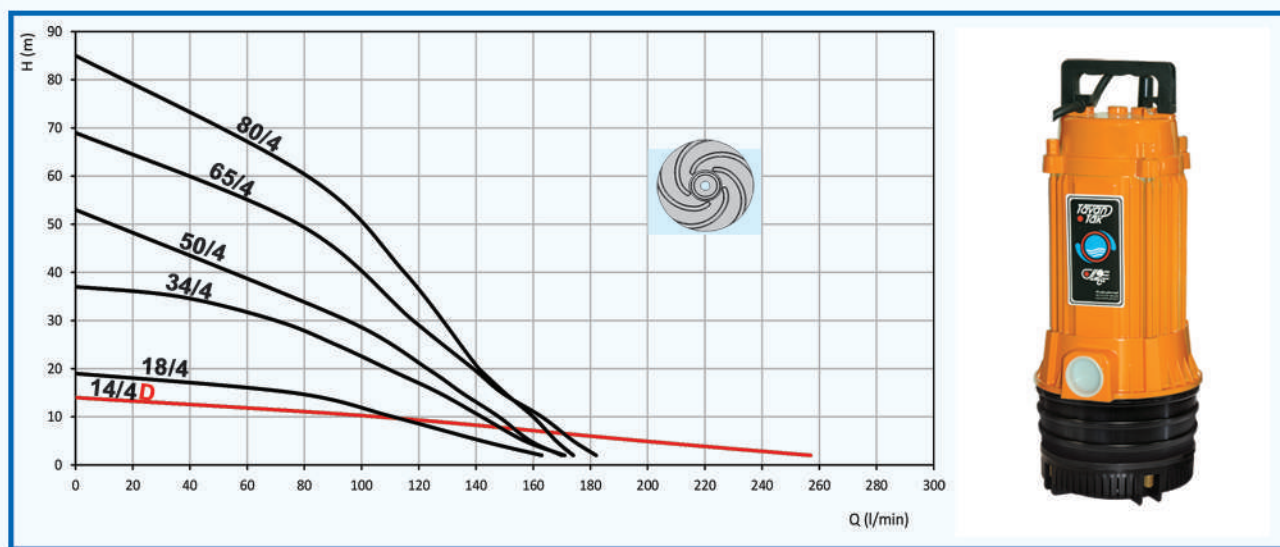
Application:

TMR4 Pump is used for inside the pool, stream, wells, irrigation systems, fountains and water points that require rapid discharge.

Technical Design:

Electromotor: Completely Sealing. It can operate up to 20m underwater.
The maximum temperature is 40°C.

Impeller: is made of two types of open and closed, stainless steel and die casting Aluminium.
The stainless steel type is used for the clean water and the die casting Aluminium type is for drainage.

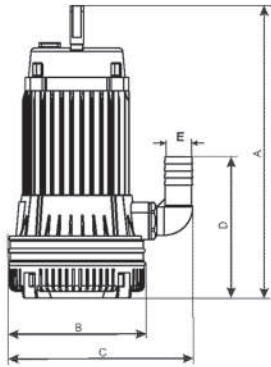


Model:

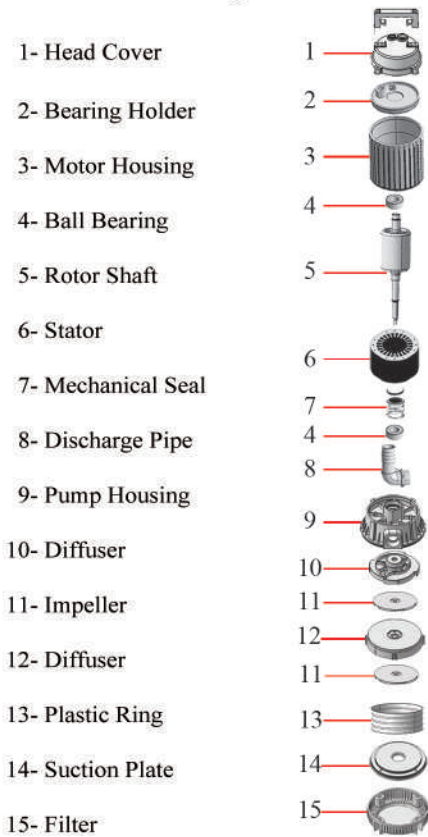
TMR4 Submersible water pump is in two types of single phase & three phase .

Model	Hmax (m)	H Range (m)	Qmax (l/min)	I (A)	V (v)	P (kw)	W (kg)
TMR 14/4 D	14	2 - 10	230	4.6	220	0.9	11.5
TMR 18/4	18	2 - 14	190	3.9	220	0.7	11.5
TMR 34/4	34	10 - 28	205	6.6	220	1.3	13.2
TMR 50/4	50	20 - 44	205	8.9	220	1.7	14.7
TMR 65/4 S/W	65	32 - 58	205	12(S)	220(S)	2	16.9(S)
				3.7(W)	380(W)		16.2(W)
TMR 80/4 S/W	80	40 - 74	205	14.5(S)	220(S)	2.8	18.1(S)
				5.5(W)	380(W)		17.4(W)

All weights are without cables.
F: with automatic level control
S: single phase
W: three phase

Dimension Table:


Model	اندازه های خارجی پمپ				
	A (mm)	B (mm)	C (mm)	D (mm)	E (inch)
TMR 14/4 D	385	190	257	175	1 1/4
TMR 18/4	385	190	257	175	1 1/4
TMR 34/4	417	190	257	198	1 1/4
TMR 50/4	450	190	257	221	1 1/4
TMR 65/4 S/W	482	190	257	243	1 1/4
TMR 80/4 S/W	515	190	257	243	1 1/4

Electromotor Component Parts:

Material components:

Head cover	Cast Iron Aluminium
Motor housing	Injection Al
Rotor Shaft	Stainless steel
Pump housing	Injection Al
Impeller	stainless steel Die casting aluminium
Diffuser	P.A
Filter	P.P
Mechanical Seal	Ceramic Carbide

Discharge Table:

Model	Q(l/min)	H(m)														
		2	5	10	15	20	25	30	35	40	45	50	60	70	80	90
TMR 14/4 D	230	180	55	0												
TMR 18/4	190	171	130	83	0											
TMR 34/4	205	184	164	138	117	90	68	26	0							
TMR 50/4	205	185	174	158	138	121	105	88	62	54	25	0				
TMR 65/4 S/W	205	194	182	168	157	142	130	116	106	94	79	22	0			
TMR 80/4 S/W	205	194	187	176	168	159	151	143	132	125	118	98	78	50	0	

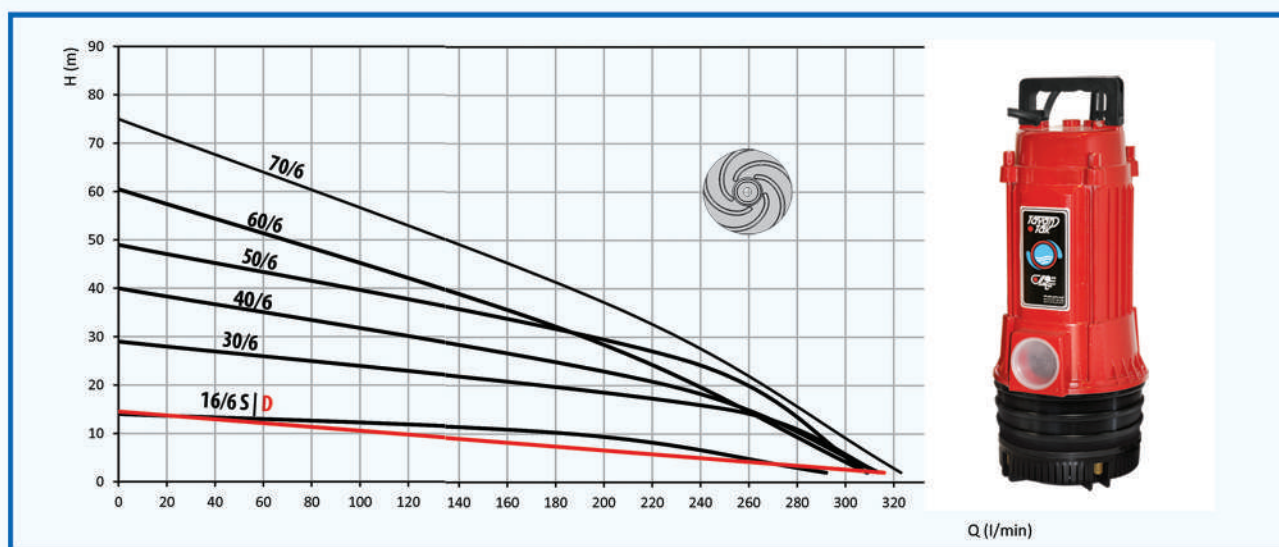
Application:

TMR6 Pump is used for inside the pool, stream, wells, irrigation systems, fountains and water points that require rapid discharge.

Technical Design:

Electromotor: Completely sealing. It can operate up to 20m underwater. The maximum temperature is 40°C.

Impeller: Is made of two types of open and closed, stainless steel and Bronze (TMR16/6 D Bronze). The stainless steel type is used for the clean water and the Bronze type is for drainage.

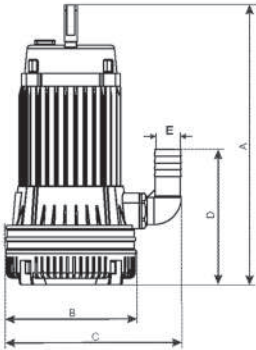


Model:

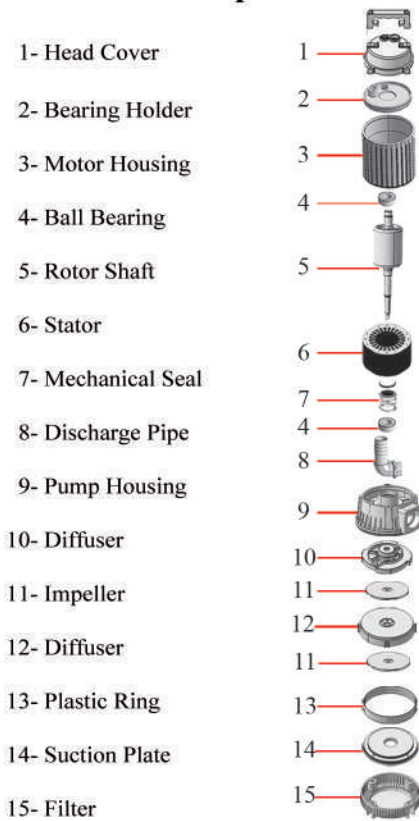
TMR6 Submersible water pump is in two types of single phase & three phase .

Model	Hmax (m)	H Range (m)	Qmax (l/min)	I (A)	V (v)	P (kw)	W (kg)
TMR 16/6 D S (F)	16	2 - 12	380	7	220	1.3	15
TMR 16/6 S (F)	16	2 - 12	300	4.1	220	0.8	13.8
TMR 30/6 S (F)	30	10 - 25	310	5.9	220	1.2	17.3
TMR 40/6 S (F)	40	16 - 35	310	8	220	1.5	18.4
				2.9	380		17
TMR 51/6 S/W	51	21 - 45	310	10(S)	220(S)	2	19.7(S)
				4.8(W)	380(W)		19(W)
TMR 62/6 S/W	62	30 - 55	310	12.3(S)	220(S)	2.4	20.5(S)
				5(W)	380(W)		20(W)
TMR 70/6 S/W	70	37 - 68	310	5.4	380	2.6	20.7

All weights are without cables.
 F: with automatic level control
 S: single phase
 D: Dirty Water

Dimension Table:


Model	اندازه های خارجی پمپ				
	A (mm)	B (mm)	C (mm)	D (mm)	E (inch)
TMR 16/6 D S (F)	413	190	262	195	2
TMR 16/6 S (F)	413	190	262	195	2
TMR 30/6 S (F)	461	190	262	222	2
TMR 40/6 S (F)	490	190	262	250	2
TMR 51/6 S/W	528	190	262	279	2
TMR 62/6 S/W	557	190	262	307	2
TMR 70/6 S/W	575	190	262	336	2

Electromotor Component Parts:

Material components:

Head cover	Casting Iron Aluminium
Motor housing	Injection Al
Rotor Shaft	Stainless steel
Pump housing	Injection Al
Impeller	Stainless steel Bronze
Diffuser	P.A
Filter	P.P
Mechanical Seal	Ceramic carbide

Discharge Table:

Model	Q(l/min)	H(m)															
		2	5	10	15	20	25	30	35	40	45	50	55	60	65	70	
TMR 16/6 - D		380	313	190	0												
TMR 16/6		300	243	147	0												
TMR 30/6		310	291	262	219	178	94	0									
TMR 40/6		310	283	251	225	196	169	127	32	0							
TMR 51/6 S/W		310	284	253	235	217	197	174	151	116	52	0					
TMR 62/6 S/W		310	288	275	261	246	231	217	200	180	160	141	110	62	0		
TMR 70/6 W		310	280	269	254	240	230	216	203	186	170	155	137	112	78	0	

Application:

TPT4 Pump is used for inside the pool, stream, well, small irrigation systems and the wells created by the drilling machines.

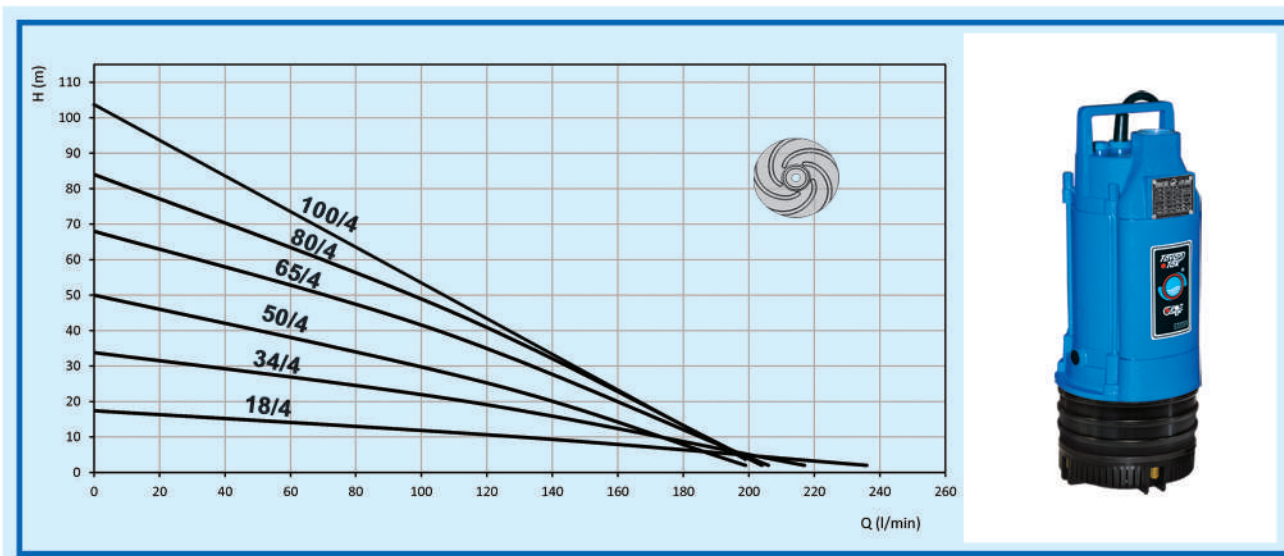
Technical Design:

The pump has side-channel body and its engine cools easlily with water.

Electromotor: It is completely sealing. It can operate up to 20m underwater.

Maximum temperature is 40°C.

Impeller: Is made of stainless steel and closed type.

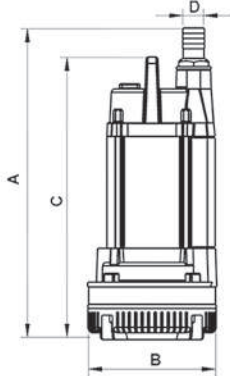


Model:

TPT4 Pump with Stainless steel impeller has 9 models in two types single phase & three phase.

Model	Hmax (m)	H Range (m)	Qmax (l/min)	I (A)	V (v)	P (kw)	W (kg)
TPT 18/4 S (F)	18	2 - 14	230	4	220	0.7	18.2
TPT 34/4 S (F)	34	10 - 28	220	6.3	220	1.2	19
TPT 50/4 S/W (F)	50	20 - 44	220	8.5	220(S)	1.7	19.5
				3.3	380(W)		
TPT 65/4 S/W (F)	65	32 - 58	210	11.7	220(S)	2.2	21.3
				4	380(W)		
TPT 80/4 S/W	80	40 - 74	210	14.2	220(S)	2.8	22.5
				5.7	380(W)		
TPT 100/4	100	48 - 92	210	16.7	220(S)	3.2	27

All weights are without cables.
 F: with automatic level control
 S: single phase
 W: three phase

Dimension Table:


Model	اندازه های خارجی پمپ			
	A (mm)	B (mm)	C (mm)	D (mm)
TPT 18/4 S (F)	430	190	397	1 1/4
TPT 34/4 S (F)	453	190	420	1 1/4
TPT 50/4 S/W (F)	485	190	452	1 1/4
TPT 65/4 S/W (F)	518	190	485	1 1/4
TPT 80/4 S/W	560	190	527	1 1/4
TPT 100/4	607	190	574	1 1/4

Electromotor Component Parts:

- | | | |
|--------------------|----|--|
| 1- Discharge Pipe | 1 | |
| 2- Head Cover | 2 | |
| 3- Bearing Holder | 3 | |
| 4- Motor Housing | 4 | |
| 5- Ball Bearing | 5 | |
| 6- Rotor Shaft | 6 | |
| 7- Stator | 7 | |
| 8- Mechanical Seal | 8 | |
| 9- Pump Housing | 9 | |
| 10- Impeller | 10 | |
| 11- Diffuser | 10 | |
| 12- Suction Plate | 12 | |
| 13- Plastic Ring | 13 | |
| 14- Filter | 14 | |

Material components:

Head cover	Ductile Cast Iron
Motor Housing	Injection Al
Rotor Shaft	Stainless steel
Pump Housing	Cast Iron
Impeller	Stainless steel
Diffuser	P.A
Filter	P.P
Mechanical Seal	Ceramic carbide

Discharge Table:

Model	Q(l/min)	H(m)															
		2	5	10	15	20	25	30	35	40	45	50	60	70	80	90	100
TPT 18/4 S (F)		230	190	125	45												
TPT 34/4 S (F)		220	185	162	133	100	65	15									
TPT 50/4 S/W(F)		220	199	182	167	151	133	117	99	79	52						
TPT 65/4 S/W(F)		210	190	175	165	153	144	131	121	108	95	79	44				
TPT 80/4 S/W		210	196	184	176	169	160	151	142	133	125	117	96	70	36		
TPT 100/4		210	184	178	172	162	157	151	144	137	131	124	110	92	75	51	0

Application:

TPT6 Pump is used for inside the pool, stream, well, irrigation systems and the wells created by the drilling machines.

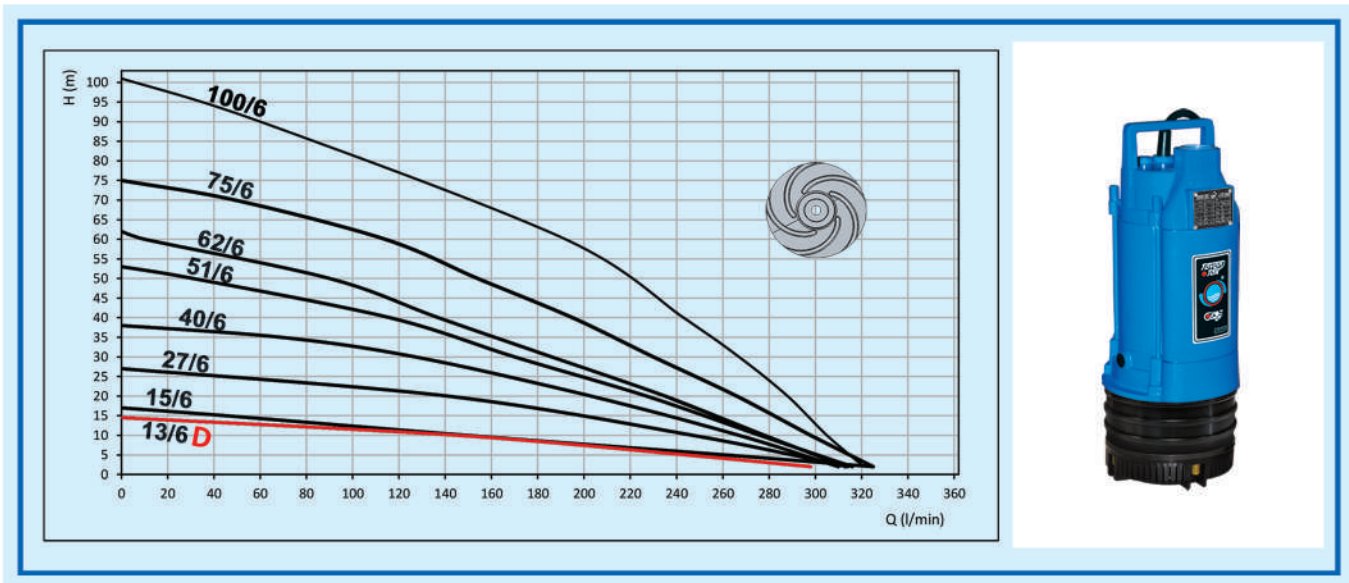
Technical Design:

The pump has side-channel body and its engine cools easlily with water.

Electromotor: It is completely sealing. It can operate up to 20m underwater.

Maximum temperature is 40°C.

Impeller: Is made of stainless steel and closed type.



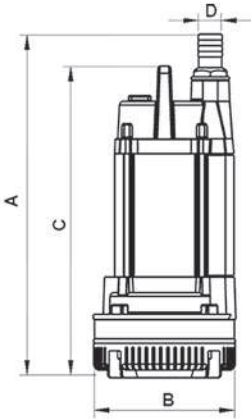
Model:

TPT6 Pump with Stainless steel impeller has 11 models in two types, single phase & three phase.

TPT 13/6 Pump with Brass impeller is used for low-concentration dirty waters .

Model	Hmax (m)	H Range (m)	Qmax (l/min)	I (A)	V (v)	P (kw)	W (kg)
TPT 13/6 D S (F)	13	2 - 12	320	5.5	220	1	18.5
TPT 15/6 S (F)	15	2 - 12	295	3.6	220	0.7	18
TPT 27/6 S (F)	27	10 - 25	310	5.7	220	1.1	19.1
TPT 40/6 S/W (F)	40	16 - 35	310	8.1(S) 2.7(W)	220(S) 380(W)	1.6	20
TPT 51/6 S/W	51	21 - 45	310	10.1(S) 3.6(W)	220(S) 380(W)	2	21
TPT 62/6 S/W	62	30 - 55	310	12.6(S) 5.2(W)	220(S) 380(W)	2.5	23
TPT 75/6 S/W	75	37 - 68	310	15	220	2.8	27
TPT 100/6 W	100	48 - 92	350	8	380	3.7	33

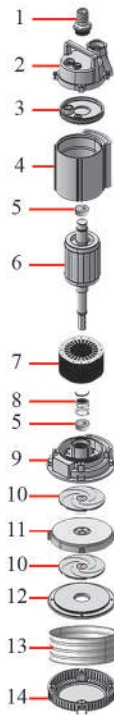
All weights are without cables.
 F: with automatic level control
 S: single phase
 W: three phase
 D: dirty water

Dimension Table:


Model	اندازه های خارجی پمپ			
	A (mm)	B (mm)	C (mm)	D (mm)
TPT 13/6 D S (F)	435	190	397	2
TPT 15/6 S (F)	435	190	397	2
TPT 27/6 S (F)	474	190	436	2
TPT 40/6 S/W (F)	512	190	474	2
TPT 51/6 S/W	541	190	503	2
TPT 62/6 S/W	589	190	551	2
TPT 75/6 S/W	638	190	600	2
TPT 100/6 W	739	190	700	2

Electromotor Component Parts:

- 1- Discharge Pipe
- 2- Head Cover
- 3- Bearing Holder
- 4- Motor Housing
- 5- Ball Bearing
- 6- Rotor Shaft
- 7- Stator
- 8- Mechanical Seal
- 9- Pump Housing
- 10- Impeller
- 11- Diffuser
- 12- Suction Plate
- 13- Plastic Ring
- 14- Filter


Material components:

Head cover	Ductile Cast Iron
Motor Housing	Injection Al
Rotor Shaft	Stainless steel
Pump Housing	Cast Iron
Impeller	Stainless steel
Diffuser	P.A
Filter	P.P
Mechanical Seal	Ceramic carbide

Discharge Table:

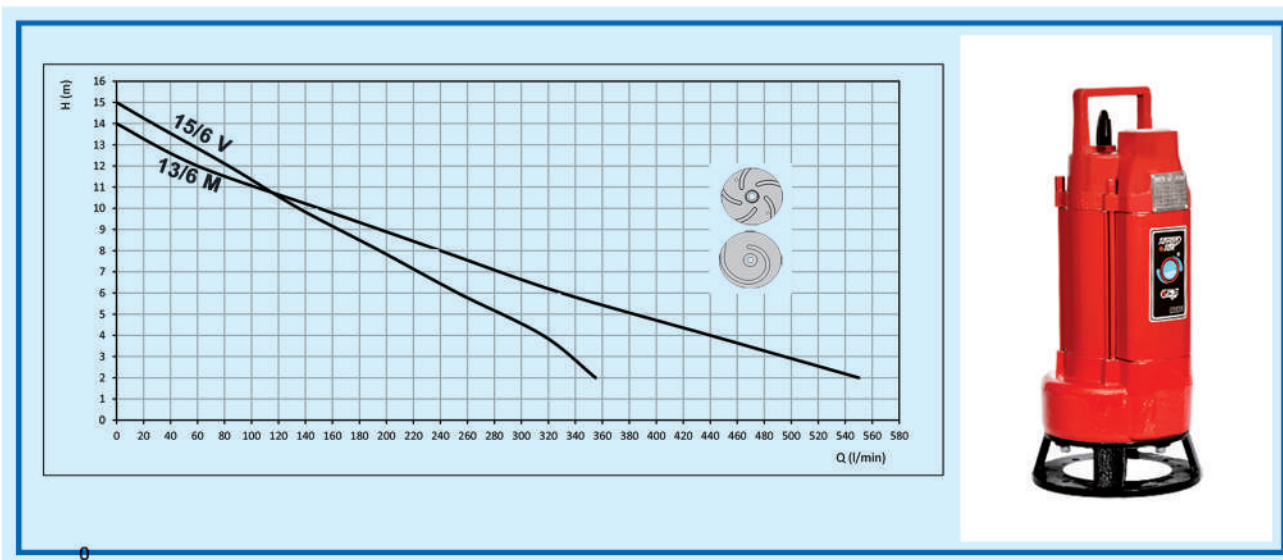
Model	Q(l/min)	H(m)															
		2	5	10	15	20	25	30	35	40	45	50	60	70	80	90	100
TPT 13/6 D S (F)		320	225	94													
TPT 15/6 S (F)		295	225	135													
TPT 27/6 S (F)		310	270	232	185	127	36										
TPT 40/6 S/W (F)		310	281	250	224	198	164	128	78								
TPT 51/6 S/W		310	280	247	227	208	182	160	135	106	70	0					
TPT 62/6 S/W		310	291	274	258	242	226	211	193	173	151	130	66				
TPT 75/6 S/W		310	282	271	258	247	232	216	203	184	168	153	113	52			
TPT 100/6 W		350	323	313	298	286	265	255	246	230	218	206	180	130	107	66	0

Application:

TPA Pump is used for sewage discharge with high density and sewages containing fibers or fibrous materials.

Technical Design:

Electromotor: Is made of injection aluminum, which cools the pump. TPA pump has a "2" output. Also, the parts that are in contact with fluids are made of hard cast iron that can withstand high pressures and can work easily under difficult conditions.



Model:

Based on the impeller type, it has two models, single channel & multi channel (M & V)

Model	Hmax (m)	H Range (m)	Qmax (l/min)	I (A)	V (v)	P (kw)	W (kg)
TPA 15/6 - V S/W	15	2 - 11	450	11.8(S)	220(S)	2.3	17
				4.1(W)	380(W)		
TPA 13/6 - M S/W	13	2 - 9	550	10.8(S)	220(S)	2	16.8
				3.6(W)	380(W)		

All weights are without cables.

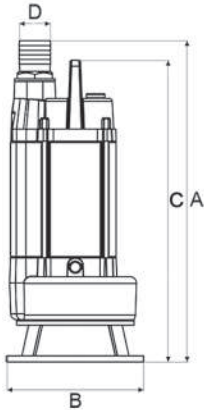
S: single phase

W: three phase

V: vortex impeller

M: single channel impeller

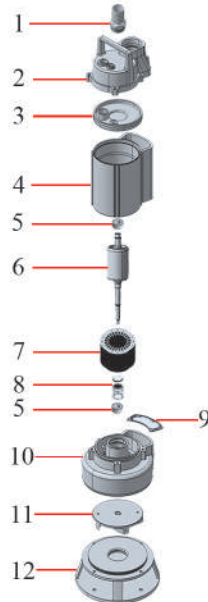
Dimension Table:



Model	اندازه های خارجی پمپ			
	A (mm)	B (mm)	C (mm)	D (mm)
TPA 15/6 - V S/W	524	222	492	2
TPA 13/6 - M S/W	524	222	492	2

Electromotor Component Parts:

- 1- Discharge Pipe
- 2- Head Cover
- 3- Bearing Holder
- 4- Motor Housing
- 5- Ball Bearing
- 6- Rotor Shaft
- 7- Stator
- 8- Mechanical Seal
- 9- Rubber
- 10- Pump Housing
- 11- Impeller
- 12- Suction Plate



Material components:

Head Cover	Ductile Cast Iron
Motor Housing	Injection Al
Rotor Shaft	Stainless steel
Pump Housing	Cast Iron
Impeller	Ductile Cast Iron
Suction Plate	Ductile Cast Iron
Mechanical Seal	Silicon Carbide

Discharge Table:

Model		Hmax (m)	H Range (m)	Qmax (l/min)	I (A)	V (v)	P (kw)	W (kg)
TPC12 - M (F)		12	2 - 8	308	4.2	220	0.85	19.9
TPC10 - V (F)		10	2 - 6	337	5.3	220	1	19.5

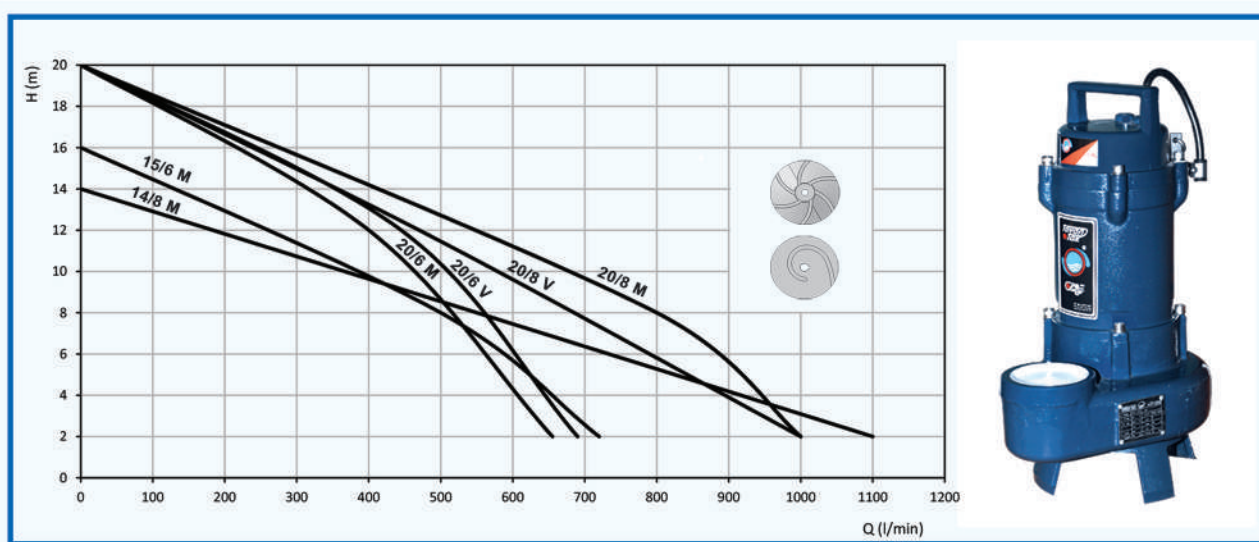
Application:

TPB Pump is used to discharge industrial wastewaters that contain some chemicals (non-corrosive) or fiber materials and synthetic fibers.

Technical Design:

Electromotor: Completely sealing. Discharging pipe is 2" & 3". Maximum temperature is 40°C.

Impeller: Is made of cast iron and two types , Single channel and multi-channel. (M & V)



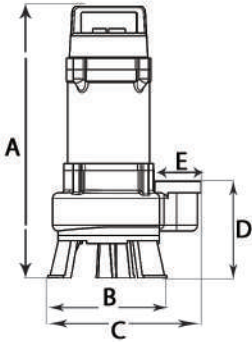
Model: TPB Pump is in two types of single phase & three phase.

Model	Hmax (m)	H Range (m)	Qmax (l/min)	I (A)	V (v)	P (kw)	W (kg)
TPB 15/6 - M S/W	15	2 - 12	720	8(S)	220(S)	1.5	27.5
				2.7(W)	380(W)		
TPB 20/6 - V S/W	20	8 - 16	690	10.8(S)	220(S)	2	27.5
				3.6(W)	380(W)		
TPB 20/6 - M S	20	8 - 16	650	9.6	220	1.8	27.5
TPB 14/8 - M S/W	14	2 - 11	1100	8(S)	220(S)	1.5	30
				2.7(W)	380(W)		
TPB 20/8 - M S	20	8 - 16	1000	10.8	220	2.1	30.5
TPB 20/8 - V S/W	20	8 - 16	1000	4(S)	220(S)	2.1	30
				4.5(W)	380(W)		

All weights are without cables.

S: single phase
W: three phase

M: single channel impeller
V: vortex impeller

Dimension Table:


Model	A (mm)	B (mm)	C (mm)	D (mm)	D (inch)
TPB -/6	469	215	245	166	2
TPB -/8	480	215	300	172	3

Electromotor Component Parts:

Material components:

Head cover	Ductile Cast Iron
Motor housing	Cast Iron
Rotor Shaft	Stainless steel
Pump housing	Cast Iron
Impeller	Cast Iron
Suction Plate	Ductile Cast Iron
Mechanical Seal	Silicon Carbide

Discharge Table:

Model	Q(l/min)	H(m)									
		2	4	6	8	10	12	14	16	18	20
TPB 15/6 - M S/W		720	660	580	500	400	270	100	0		
TPB 20/6 - V S/W		690	650	610	565	510	445	370	280	160	0
TPB 20/6 - M S		655	600	555	480	450	400	315	250	160	0
TPB 14/8 - M S/W		1100	880	720	550	400	190	0			
TPB 20/8 - M S		1000	900	800	655	575	450	305	170	100	0
TPB 20/8 - V S/W		940	860	770	680	580	470	355	235	120	0

Application:

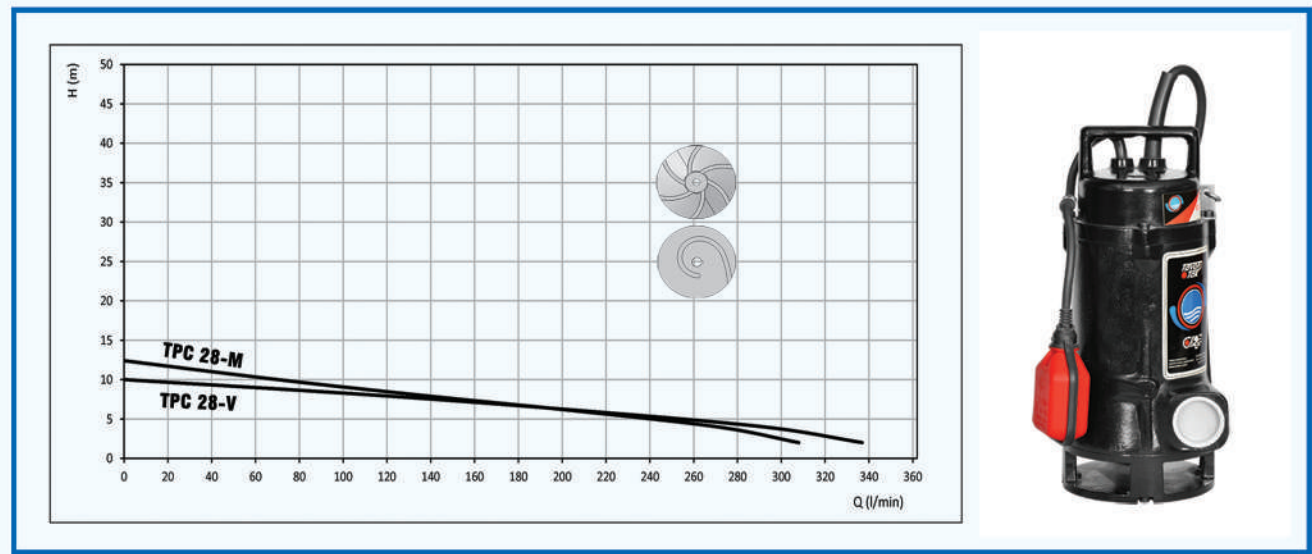
TPC Pump is used for small industrial sewages, swimming pools, streams, drainage ,fiber materials and synthetic fibers.

Technical Design:

Electromotor: Completely sealing.It can work easily underwater.

Maximum temperature is 40°C.

Impeller: Is made of cast iron and two types , Single channel and multi-channel. (M & V)

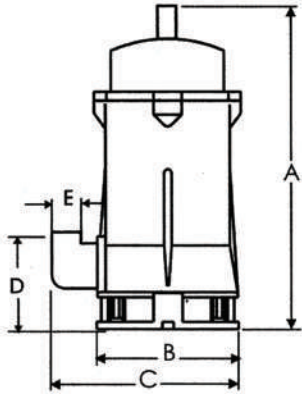


Model: TPC Pump is in two types, single phase and three phase.

Model	Hmax (m)	H Range (m)	Qmax (l/min)	I (A)	V (v)	P (kw)	W (kg)
TPC12 - M (F)	12	2 - 8	308	4.2	220	0.85	19.9
TPC10 - V (F)	10	2 - 6	337	5.3	220	1	19.5

- F: with automatic level control
- S: single phase
- W: three phase
- V: vortex impeller
- M: single channel impeller

Dimension Table:



Model		اندازه های خارجی پمپ				
		A (mm)	B (mm)	C (mm)	D (mm)	E (inch)
TPC12 - M	(F)	335	150	215	163	1 1/2
TPC10 - V	(F)	335	150	215	163	1 1/2

Electromotor Component Parts:

- 1- Head Cover
- 2- Bearing Holder
- 3- Motor Housing
- 4- Discharge Pipe
- 5- Ball Bearing
- 6- Rotor Shaft
- 7- Stator
- 8- Mechanical Seal
- 9- Impeller
- 10- Suction Plate



Material components:

<u>Head cover</u>	<u>Cast Iron</u>
<u>Motor housing</u>	<u>Cast Iron</u>
<u>Rotor Shaft</u>	<u>Stainless steel</u>
<u>Pump housing</u>	<u>Cast Iron</u>
<u>Impeller</u>	<u>Cast Iron</u>
<u>Suction Plate</u>	<u>Cast Iron</u>
<u>Mechanical Seal</u>	<u>Silicon Carbide</u>

Discharge Table:

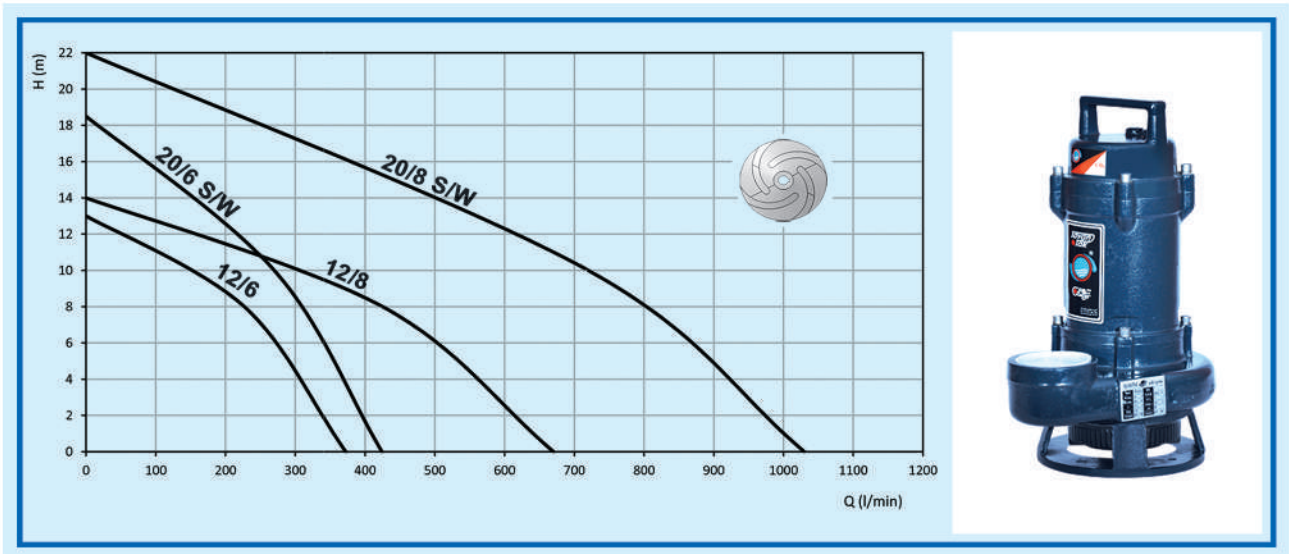
Model		H(m)					
		2	4	6	8	10	12
TPC12 - M	(F)	308	271	207	136	70	0
TPC10 - V	(F)	337	292	211	116	0	

Application:

TPD Pump is used to drain dirty or muddy waters, and low-concentration waters, sludge, domestic and industrial sewage depending on the rate of discharge, the height and the type of liquids.

Technical Design:

All parts are made of cast iron. At customer's request the electromotor body can be made of injection aluminum. It is completely sealing. The impeller is Vortex. It can operate up to 20m underwater. Maximum temperature is 40°C.

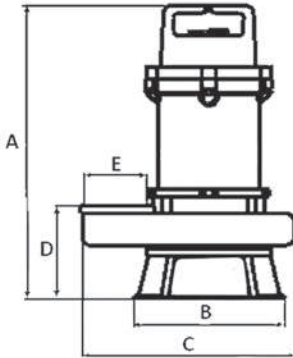


Model: Based on the impeller type, it has two models, single channel & multi channel (M & V).

Model		Hmax (m)	H Range (m)	Qmax (l/min)	I (A)	V (v)	P (kw)	W (kg)
TPD 12/6	S (F)	12	2 - 8	465	5.4	220	1	22.6
TPD 20/6	S (F)	20	8 - 16	525	8	220	1.5	24
TPD 20/6	w	20	8 - 16	525	2.7	380	1.5	23
TPD 12/8	S (F)	12	2 - 8	700	6	220	1.1	24.5
TPD 20/8	S	20	8 - 16	935	12	220	2.2	27.5
TPD 20/8	W	20	8 - 16	935	4	380	2.2	24.6

- F: with automatic level control
- S: single phase
- W: three phase
- V: vortex impeller
- M: single channel impeller

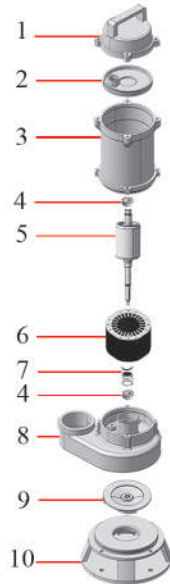
Dimension Table:



Model	A (mm)	B (mm)	C (mm)	D (mm)	E (inch)
TPD 12/6 S (F)	419	215	233	146	2
TPD 20/6 S (F)	436	215	233	146	2
TPD 20/6 W	419	215	233	146	2
TPD 12/8 S (F)	426	215	286	154	3
TPD 20/8 S	443	215	286	154	3
TPD 20/8 W	426	215	286	154	3

Electromotor Component Parts:

- 1- Head Cover
- 2- Bearing Holder
- 3- Motor Housing
- 4- Ball Bearing
- 5- Rotor Shaft
- 6- Stator
- 7- Mechanical Seal
- 8- Pump Housing
- 9- Impeller
- 10- Suction Plate



Material components:

Head Cover	Ductile Cast Iron
Motor Housing	Cast iron Injection AI
Rotor Shaft	Stainless steel
Pump Housing	Cast Iron
Impeller	Cast Iron
Suction Plate	Ductile Cast Iron
Mechanical Seal	Silicon Carbide

Discharge Table:

Model	Q(l/min)	H(m)											
		0	2	4	6	8	10	12	14	16	18	20	
TPD 12/6 S		465	435	400	350	285	180	0					
TPD 20/6 S/W		525	485	442	395	340	280	218	160	105	55	0	
TPD 12/8 S		700	640	570	490	385	250	105					
TPD 20/8 S/W		935	870	795	710	620	530	435	340	240	130	0	

F: with automatic level control
 S: single phase
 W: three phase
 V: vortex impeller
 M: single channel impeller

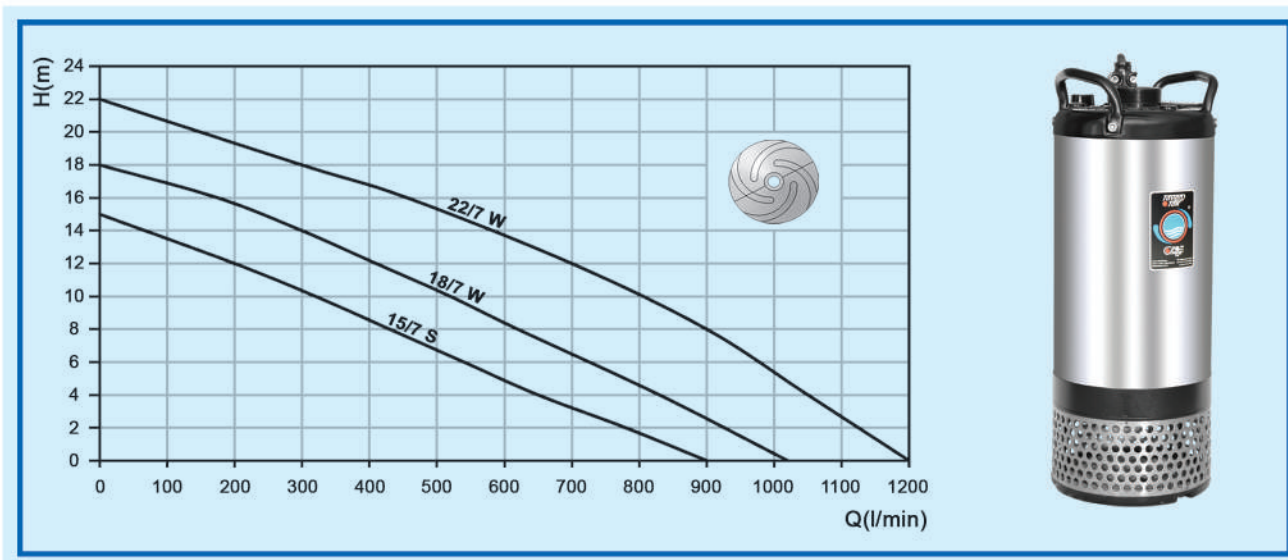
Application:

The Pump is used to channel dirty water, pumping clean water, discharge of water with fibers and in the narrow wells created by the drilling machines. They also are very suitable for irrigation system.

Technical Design:

TMK pump has a 2½" output. Proper temperature for pump operation is between 35°C to 60°C.

Impeller: Is made of hard cast iron and multi-channel type.



Model:

TMK Pump has 3 models.

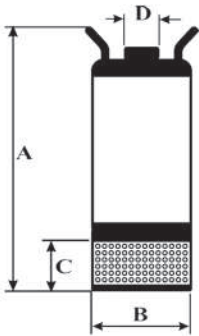
Model	H _{max} (m)	Q _{max} (l/min)	I (A)	V (v)	P (kw)	W (kg)
TMK15/7 S	15	900	9.2	220	1.5	33
TMK18/7 W	18	1020	4.5	380	2	33
TMK22/7 W	22	1200	5.6	380	2.7	39

All weights are without cables.

S: single phase

W: three phase

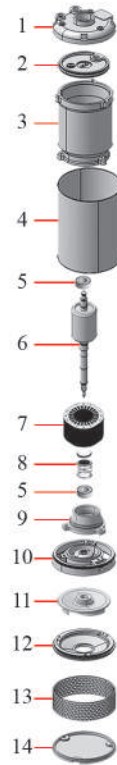
Dimension Table:



Model	A (mm)	B (mm)	C (mm)	D (inch)
TMK15/7	502	220	64	2½
TMK18/7	552	220	114	2½
TMK22/7	599	220	114	2½

Electromotor Component Parts:

- 1- Head Cover
- 2- Up Bearing Holder
- 3- Motor Housing
- 4- Steel Housing
- 5- Ball Bearing
- 6- Rotor Shaft
- 7- Stator
- 8- Mechanical Seal
- 9- Bearing Holder
- 10- Pump Housing
- 11- Impeller
- 12- Suction Plate
- 13- Filter
- 14- Filter Holder



Material components:

Head cover	Cast Iron
Motor Housing	Cast Iron
Rotor Shaft	Stainless steel
Impeller	Cast Iron
Suction Plate	Cast Iron
Mechanical Seal	Silicon Carbide
Filter Holder	Cast Iron

Discharge Table:

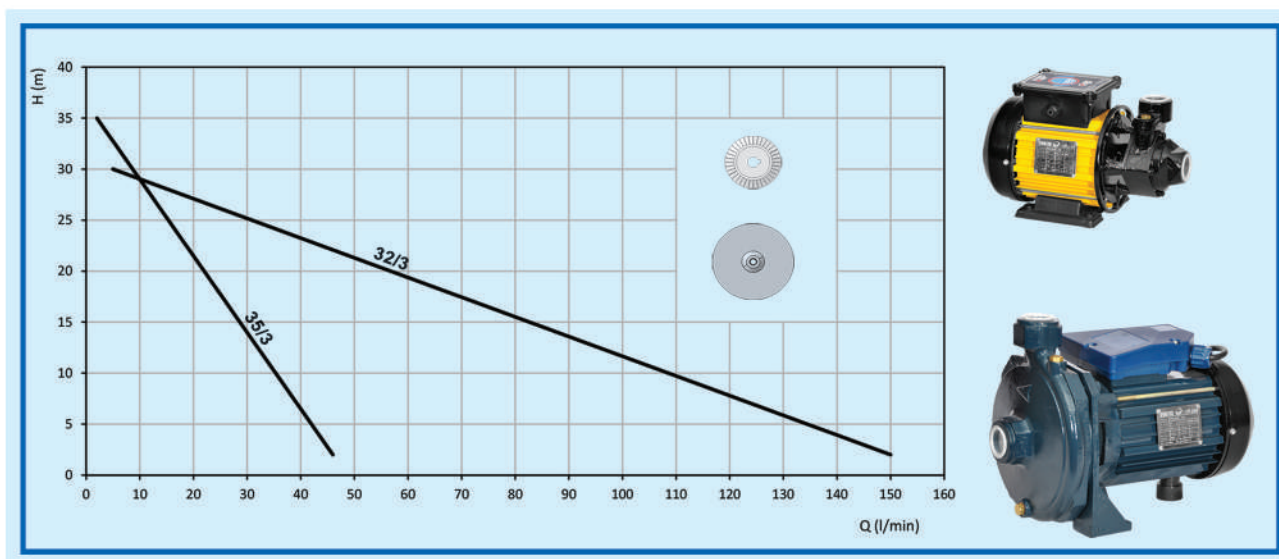
Model	Q(l/min)	H(m)										
		0	2	4	6	8	10	12	14	16	18	20
TMK15/7		900	780	650	540	420	320	200	70	0		
TMK18/7		1020	940	830	750	620	510	410	310	175	0	
TMK22/7		1200	1150	1050	1000	900	790	700	600	455	300	0

Application:

The Pump is used for smooth water transfer or to increase the pressure of water in the path of household pipes.

Technical Design:

The body is made of injection aluminum and cast iron. TPS Pump can work easily in dusty environments. In TPS 35/3 model, the parts that are in contact with water are made of Bronze Alloys, which is resistant to abrasion and prevents darkening of the water.



Model:

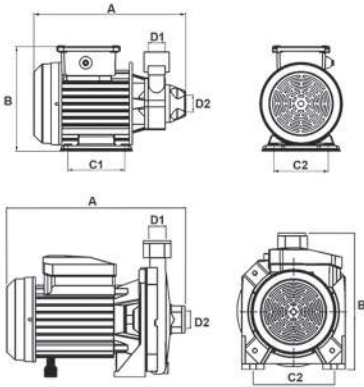
Model	H _{max} (m)	Q _{max} (l/min)	I (A)	V (v)	P (kw)	W (kg)
TPS35/3 S	35	43	1.3	220	0.2	8
TPS32/3 S	32	150	4.6	220	1	14

All weights are without cables.
S: single phase

Discharge Table:

Model	Q (l/min)	H(m)							
		2	5	10	15	20	25	30	35
TPS35/3 S		43	39	30	24	18	12	7	0
TPS32/3 S		150	143	130	113	82	40	5	

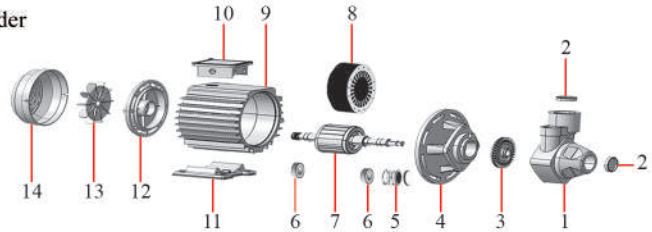
Dimension Table:



Model	A (mm)	B (mm)	C ₁ (mm)	C ₂ (mm)	D ₁ (inch)	D ₂ (inch)
TPS35/3 S	271	179	97	89	½	½
TPS32/3 S	310	237	-	141	½	½

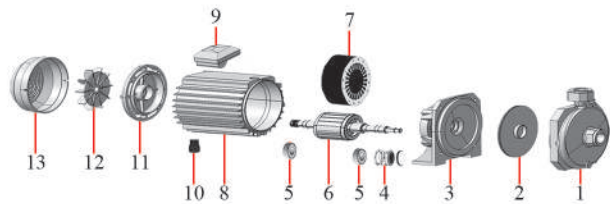
TPS35/3 Electromotor Component parts:

- 1- Pump Housing
- 2- Cover
- 3- Impeller
- 4- Bearing Holder
- 5- Mechanical Seal
- 6- Ball Bearing
- 7- Rotor Shaft
- 8- Stator
- 9- Motor Housing
- 10- Terminal and Capacitor Holder
- 11- Leg
- 12- Bearing Holder
- 13- Cooling Fan
- 14- Fan Guard Cover



TPS32/3 Electromotor Component parts:

- 1- Pump Housing
- 2- Impeller
- 3- Coupling Electromotor and Pump
- 4- Mechanical Seal
- 5- Ball Bearing
- 6- Rotor Shaft
- 7- Stator
- 8- Motor Housing
- 9- Terminal and Capacitor Holder
- 10- Leg
- 11- Bearing Holder
- 12- Cooling Fan
- 13- Fan Guard Holder



Material components:

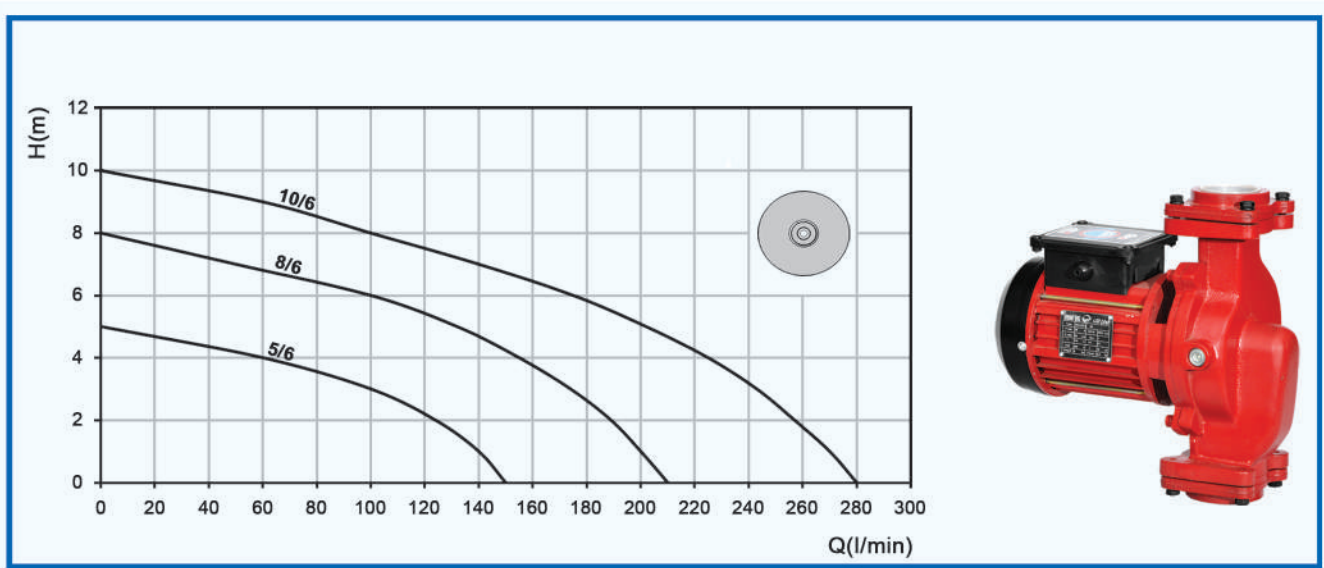
<u>Pump Housing</u>	<u>Cast Iron</u>
<u>Motor Housing</u>	<u>Injection AI</u>
<u>Rotor Shaft</u>	<u>Stainless Steel</u>
<u>Impeller</u>	<u>Brass</u>
<u>Mechanical Seal</u>	<u>Ceramic Carbide</u>

Application:

The Pump is used for circulation of hot water and transfer of radiators water.

Technical Design:

The body is made of aluminum and cast iron. TPH Pump can work easily with low noise and no vibration. Maximum temperature is 80°C in the usual conditions.



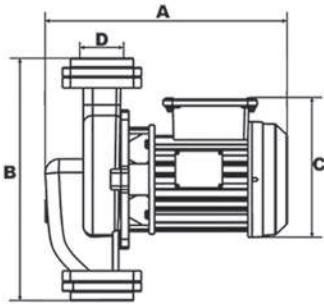
Model:

TPH centrifuge pump is manufactured in three models.

Model	H _{max} (m)	Q _{max} (l/min)	I (A)	V (v)	P (kw)	W (kg)
TPH5/6 S	5	150	1.4	220	0.5	15
TPH8/6 S	8	210	2.8	220	0.5	15
TPH10/6 S	10	280	1.7	220	0.5	15

All weights are without cables.

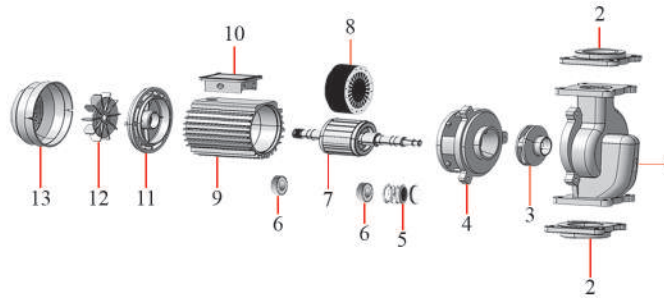
S: single phase

Dimension Table:


Model	A (mm)	B (mm)	C (mm)	D (inch)
TPH5/6 S	312	309	177	2
TPH8/6 S	312	309	177	2½
TPH8/6 S	312	309	177	3
TPH10/6 S	308	309	177	2

Electromotor Component Parts:

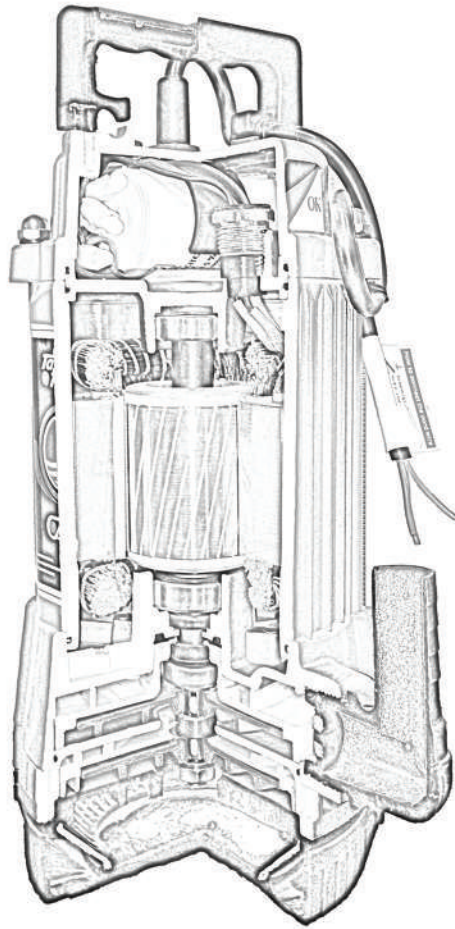
- 1- Pump Housing
- 2- Flange
- 3- Impeller
- 4- Coupling Electromotor & Pump
- 5- Mechanical Seal
- 6- Ball Bearing
- 7- Rotor Shaft
- 8- Stator
- 9- Motor Housing
- 10- Terminal & Capacitor Holder
- 11- Bearing Holder
- 12- Cooling Fan
- 13- Fan Guard Holder

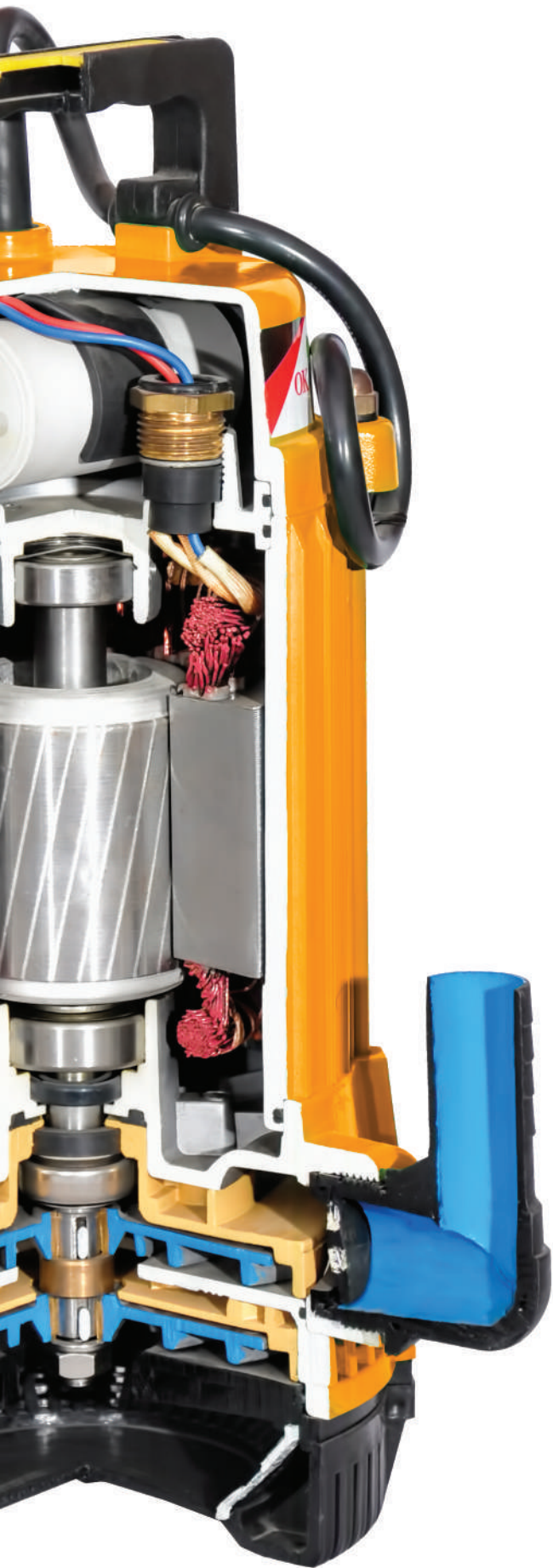

Material components:

<u>Pump Housing</u>	Cast Iron
<u>Coupling Electromotor & Pump</u>	Cast Iron
<u>Impeller</u>	Cast Iron
<u>Motor Housing</u>	Injection AI
<u>Rotor Shaft</u>	Stainless Steel
<u>Bearing Holder</u>	Aluminium
<u>Mechanical Seal</u>	Ceramic Carbide

Discharge Table:

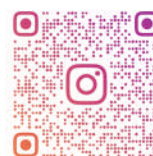
Model	Q(l/min)	H(m)										
		0	1	2	3	4	5	6	7	8	9	10
TPH5/6 S		150	140	124	100	60	0					
TPH8/6 S		210	200	189	174	155	132	100	50	0		
TPH10/6 S		280	270	257	243	225	202	175	140	100	60	0





The Best
Submersible Pump In IRAN

www.tavantak.ir
Info@tavantak.ir



TAVANTAK